

Lytle Creek (within Murfreesboro)

Pollutant Reduction Summary, 2018

303(d)	TMDL
Littoral vegetative cover	No
Siltation	Yes
E.coli	Yes

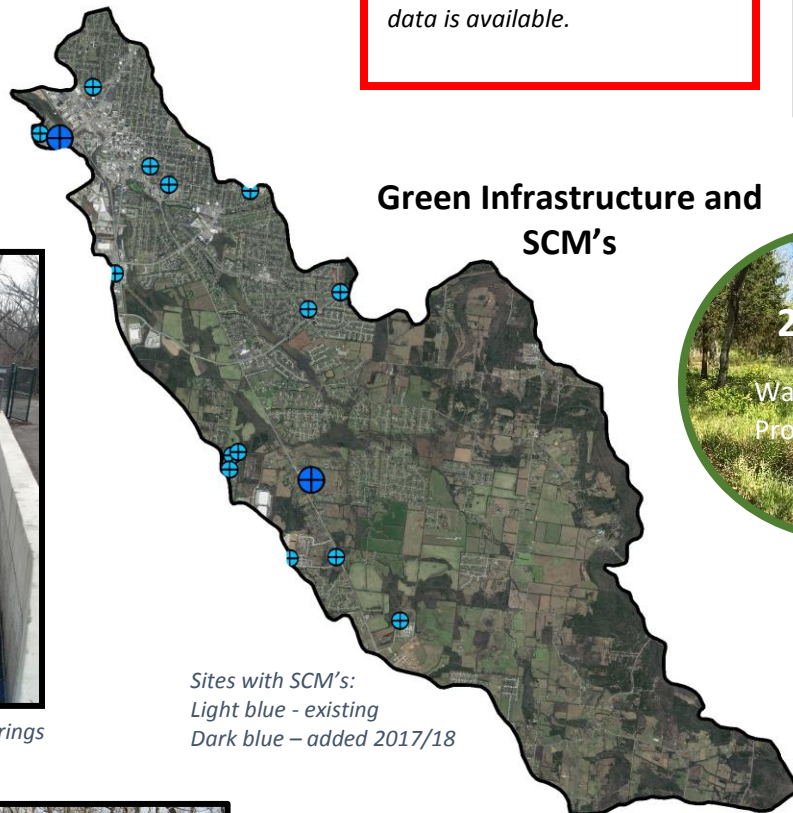
Date	LC	SB
2013		16
2014	16	
2016	24	32
2018	22	16

TMI Scores - SQSH biological sampling. LC – Lytle Creek, SB – Spring Branch

Watershed Characteristics

13.7% Imperviousness watershed- wide,
31% Imperviousness within city limits

** Imperviousness from 2017 recalculated in 2019 when new data is available.*



Green Infrastructure and SCM's



Detention: 18 ponds or 711, 144 square feet

Pavers/ porous concrete: 3.8 acres

Bioretention: 2

Sites with SCM's:
Light blue - existing
Dark blue – added 2017/18



Trash rack in the Murfree Springs Wetlands



City of Murfreesboro Urban Environmental with Parks and Water Resources planting appropriate seedlings in the Murfree Springs Wetland, a tributary to Lytle Creek.

Retrofits:

- **Spring Branch/Old Fort Park** – bioretention areas, pervious parking, enhanced swale
- **Murfree Springs Wetland** – trash racks, wetland tree planting – Murfreesboro Urban Environmental
- **Maney Ave** – Pavers: 12,209 square feet
- **Swanson Park Avenue Redevelopment** – pavers: 41,320 square feet
- **Hobgood School Pavers** – Pavers: 95,674 square feet