

# Sinking Creek

## Watershed Characteristics

### Pollutant Reduction Summary, 2018

303(d)	TMDL
Nitrate + Nitrite	No
e-coli	Yes
Vegetative cover	No

- Larger residential lots with aging infrastructure
- Minor bank erosion throughout
- Slow moving wetlands near headwaters which transitions to riffle/ run

**35%**  
Imperviousness  
*Will update with new data next year*

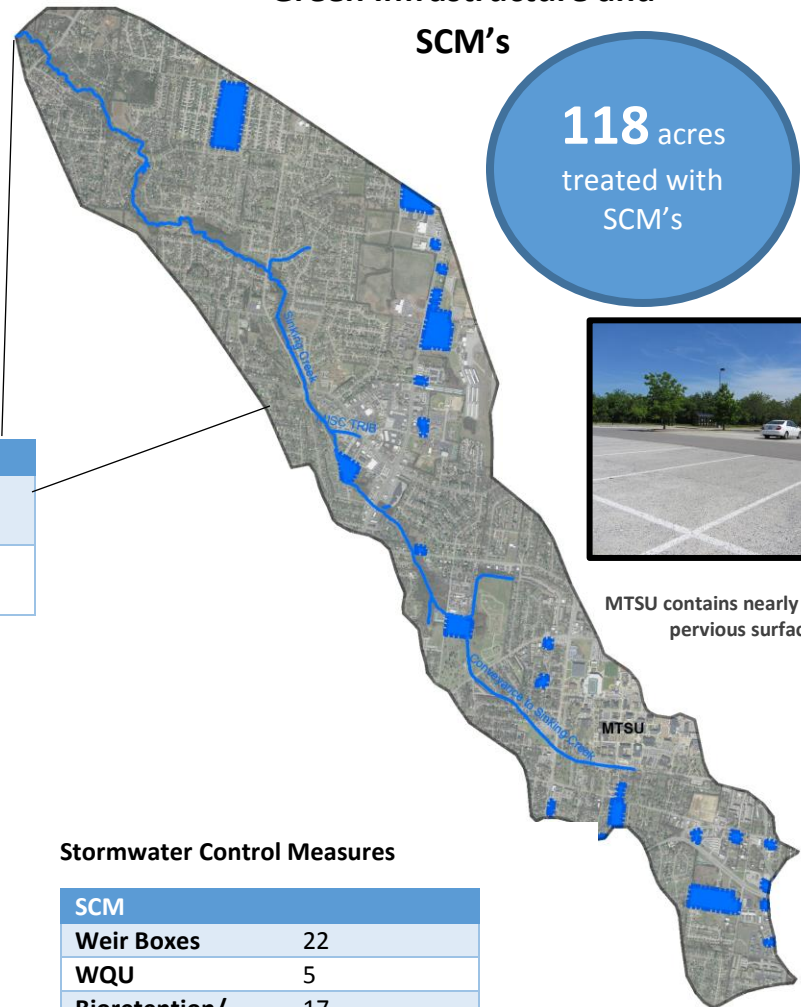


### Riparian Conservation



### Green Infrastructure and SCM's

**118** acres treated with SCM's

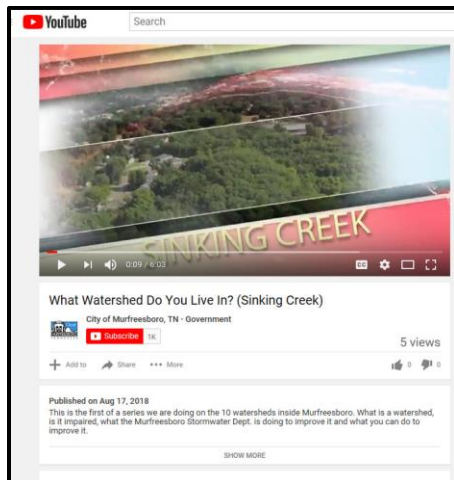


### Sampling to gage effectiveness of BMP's

Site	TMI/ Date	MMI
At Northfield Blvd	28 – 5/2016 24 – 4/18	9 – 8/2015 8 – 5/2017
At Thompson Ln	38 – 6/2016 18 – 5/2018	NA



MTSU contains nearly 5 acres of pervious surfaces



### Stormwater Control Measures

SCM	Count
Weir Boxes	22
WQU	5
Bioretention/ rain gardens	17
Ponds	40

Know your watershed PSA: Sinking Creek

